

## Grade K Lesson 1

# What shape is a butterfly?

You can use monarchs to teach about anything! Stone Mountain Memorial Association (SMMA) uses the monarch butterfly to help students apply their knowledge in other contexts and to different disciplines. The activities relate a grade-level specific GPS to monarch life, habitat, or migration.

GPS correlation: MKG1.a. Recognize and name the following basic two-dimensional figures: triangles, rectangles, squares, and circles. c. Observe concrete objects in the environment and represent the objects using basic shapes, such as drawing a representation of a house using a square together with a triangle for the roof.

### **Preparation:**

Read the background information. Print the worksheet, or make an overhead or display on your Promethean Board. Make copies for each student or pair of students. For the second part of this activity, cut out one each of these shapes in black - circle, square, and thin rectangle - plus four orange triangles for each student or pair of students.

### **Background Information:**

You may have seen monarch butterflies during the spring or autumn months at Stone Mountain Park. They have beautiful orange and black wings. They come to the Park to lay eggs on milkweed plants and to drink the nectar from the wildflowers that grow here.

Monarchs and other butterflies are insects. All insects have three body parts: head, thorax, and abdomen. Butterflies also have two pairs of wings.

When we look carefully at a butterfly, we can see many other parts such as the three pairs of legs, antennae and scales on the wings and body. But for this lesson, let's focus on the four main parts of the butterfly and their basic shapes.

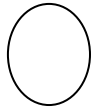
The **head** of a butterfly, like the head of a person, is generally round like a **circle** and contains the eyes and mouth of the butterfly. The **thorax**, similar to the chest of a person, is generally **square** in shape. Both pairs of **wings** are attached to the thorax and they are **triangular** in shape with one of the points attached to the thorax. The **abdomen** which is like the lower part of a person's body resembles a **rectangle** shape.

### **Activity:**

Review the basic shapes – circle, square, triangle and rectangle - and read the background information to students. Read them the essential question so they understand the focus of the lesson. Hand out worksheets. For the second part of the activity, hand out the pre-cut shapes and read the question to the students.



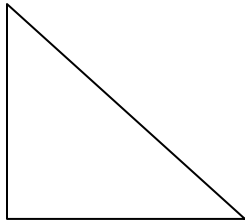
**Essential Question:** Can you match these basic shapes to the parts of the butterfly?  
Draw a line from each basic shape to the butterfly part that best matches it.



**Wing**



**Thorax**

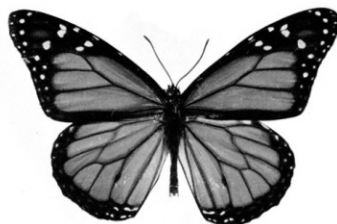


**Abdomen**



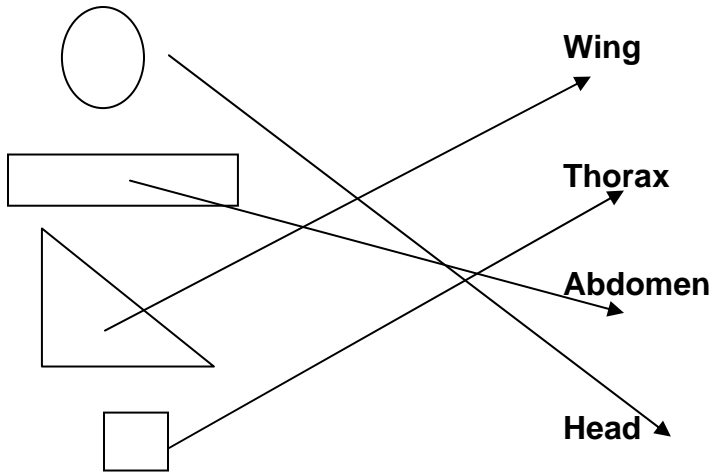
**Head**

Your teacher will give you colored paper in basic shapes. Can you make this monarch butterfly using the basic shapes? Remember that you will need 1 head, 1 thorax, 1 abdomen and 4 wings?

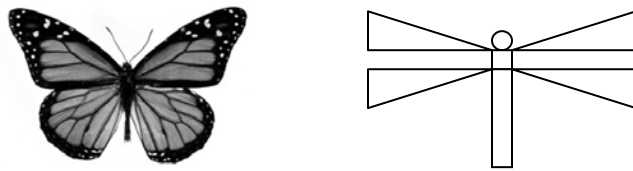


# Kindergarten Lesson Answers

## Grade K Lesson 1



Monarch butterfly using the basic shapes.



## Grade K Lesson 2

